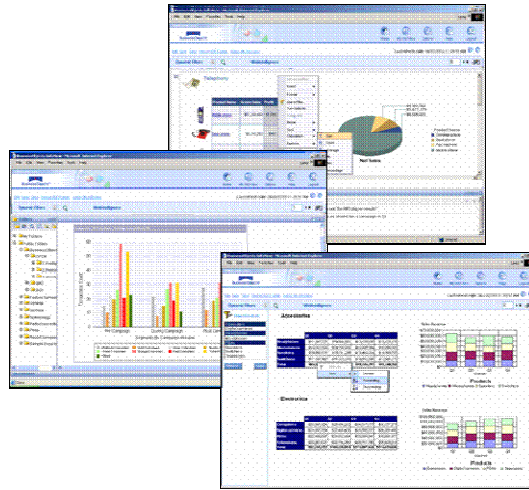


SAP BusinessObjects Edge BI

FastStart Implementation Package

INTRODUCTION

SAP BusinessObjects Edge BI is a packaged combination of the most commonly deployed modules from the SAP Business Objects Enterprise XI suite of business intelligence tools. It is designed to enable mid-market companies and organisations with smaller user communities to tap into the same power of ad hoc query, reporting and analysis that traditionally could only be afforded by larger enterprises.



Business intelligence enables an organisation to focus on analysing and understanding business information across all aspects of the enterprise - it is not a case of simply speeding up the mechanics of generating ever-increasing volumes of financial reports.

Whilst you might choose to start your business intelligence initiative in one business area, to gain the fullest value, and to have a 360 degree view of your business, it needs to become pervasive – supporting all aspects of your organisation.

SAP BusinessObjects Edge BI can provide everyone across your organisation with ready access to timely, accurate and relevant information - what they need, when they need it, where they need it, and in a format they need it, driving business performance on an entirely new scale.

THE COMSET FASTSTART PACKAGE

The experience we have gained through many SAP BusinessObjects Edge BI projects has led us to define a structured "FastStart" approach to implementation. The package is designed for mid-size organisations that need the working solution delivered quickly, efficiently and at an affordable price. Our FastStart package enables you to start reaping the benefits of SAP BusinessObjects Edge BI in as little as 4 weeks - and without the need for a large development team.

FASTSTART SERVICES

Working closely with your own personnel, our consultant will install and configure SAP BusinessObjects Edge BI and deliver the first cut BusinessObjects Universe and a number of reports. The involvement of your own users during this period, supplemented by our formal training courses, will ensure a transfer of skills and experience, leaving a lasting legacy once the project is completed.

The "FastStart" package of services includes 15 days of Comset consultancy and training, and comprises the following key steps:

- Project definition (agree scope, roles & responsibilities, project plan)
- Installation and configuration of SAP BusinessObjects Edge BI
- Design and build Universe
- Report design and build, typically up to 5 reports
- System documentation
- Support during UAT, rework
- Report Writing Course for business users
- Administration Course for IT staff
- Post implementation review

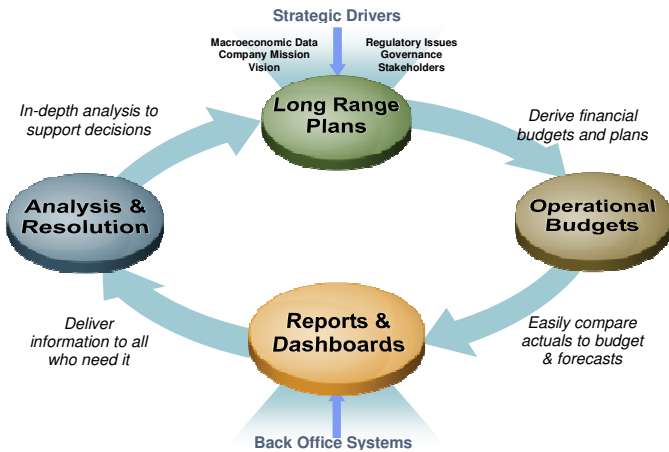
We are of course very happy to provide further consultancy and training resources beyond this 15 days to help you to gain the maximum benefit from your investment in SAP BusinessObjects Edge BI.



Corporate Performance Management Solutions

A HISTORY OF SOLUTION DELIVERY

With Comset, you have a business partner who offers the full range of services needed to meet your Corporate Performance Management (CPM) requirements, comprising project, technical and business skills.



THE COMSET ADVANTAGE

Comset, as a specialist Corporate Performance Management consultancy, has almost 20 years' experience in the delivery of budgeting, forecasting, reporting and analytical systems to organisations of all sizes, and with varied and complex information requirements.

Comset's highly experienced consultants understand the business problems faced by our clients. Using only market-leading software products, we work in collaboration with our customers to deliver high quality, cost effective solutions. The involvement of your own personnel during this period ensures a transfer of skills and experience.

Our experience and expertise in designing and building **Business Intelligence** and **Performance Management** systems ensures that the solution can be enhanced and expanded to meet the ever changing needs of your business.

Our long heritage of delivering effective, tailored solutions means you can be confident we will provide the right reporting, analysis and planning tools for effective decision making throughout your business.

We have the business experience and IT knowledge to understand the challenges you are facing.

Application areas that we address are broad ranging and include financial reporting, sales and marketing analysis, strategic planning, budgeting and operational performance measurement.

We partner with key mainstream technology and Business Intelligence and Performance Management vendors to ensure the applications we build use proven and best in class technology.

Our tried and trusted implementation methodology ensures an early payback on your investment.

Our 'total lifecycle engagement' approach provides a framework for involvement enabling us to work in true partnership with our clients at all stages of a project.



To discuss how Comset's FastStart packages of services can help you address the performance management needs of your organisation, please contact us by email to Phil OBrien, pobrien@comset.co.uk, or Ken Leedham, kleedham@comset.co.uk, or call us at the number below.

Comset Limited
4 Ilex Court, Holly Road
Twickenham Middlesex TW1 4HF

tel +44 20 8831 7700
fax +44 20 8831 7711
www.comset.co.uk
info@comset.co.uk

comset
BUSINESS INTELLIGENCE SOLUTIONS



FSBO090624